

Grammar and Punctuation Program

At LiteracyPlanet, we know that effective communication is more than just knowing the rules of grammar. To communicate effectively, students need to know how to effectively apply the rules of grammar when communicating in context. This is what our Grammar and Punctuation program aims to do.

Our Grammar and Punctuation Program enables students to practise and develop their grammar knowledge and understanding in context. Through explicit instruction of each concept, students learn the principles that govern the construction of English words, phrases, clauses, sentences and whole texts.

How our program is organised?

LiteracyPlanet's program provides explicit instruction in the three main constituents of grammar: the structure of words (morphology); the composition of phrases and clauses (syntax) and the analysis of the word, sentence and text level (pragmatics).

morphology

- the word parts and classes that consist at the word level of instruction, such as adjectives, adverbs, pronouns, etc. (e.g. possessive pronouns such as mine, hers, his, theirs).

syntax

- the composition of clauses, groups, phrases and their sub-elements such as types of groups or phrases. (e.g. noun groups, adverbial phrases, adjectival phrases, etc).

pragmatic

- the relationship among the parts of the text to the whole such as purpose and role of connectives in a paragraph. (e.g. how condition connectives describe the condition to be met).

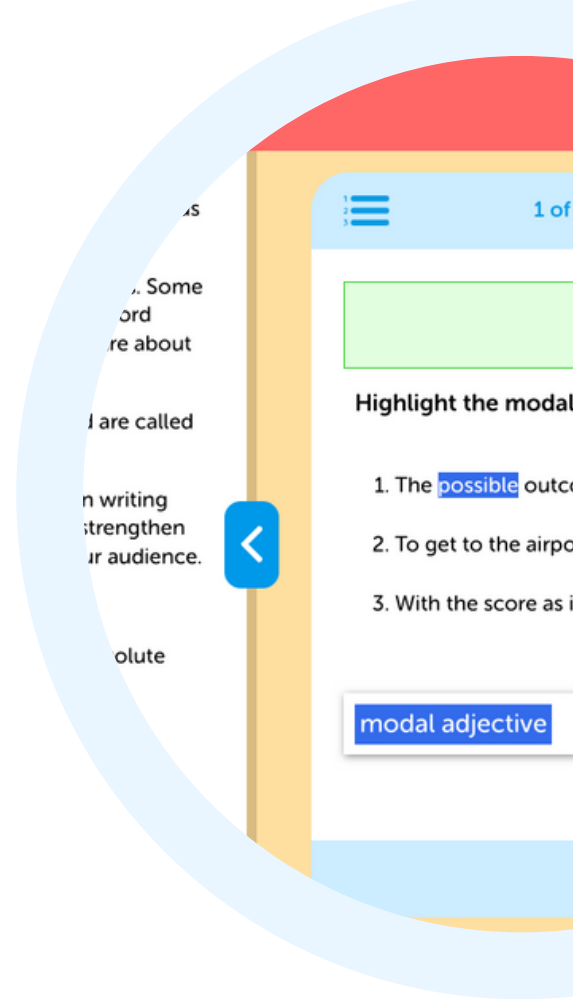
Our Grammar and Punctuation program has over 289 unique concepts. Each concept is taught within meaningful contexts, enabling students to readily apply what they learn to their own writing.



Rewrite this sentence with the correct (double) quotation marks.

The bookshop will be closed today, announced the owner.

An example of a sentence to be rewritten into direct speech.



Concepts Overview

The following tables outline how the concepts in LiteracyPlanet's Grammar and Punctuation program is organised into their text, sentence and word levels. Each concept is taught in a "mission" and includes a set of activities to teach the concept.



Text Level	Sentence Level	Word Level
Cohesion	Sentence	Adjectives
Cohesive Devices - Time Connectives	Sentence Construction - Sentences - Simple Sentences	Types of Adjectives - Descriptive Adjectives
		Adverbs
	Types of Sentences - Questions	Types of Adverbs - Adverbs - Time, Place
		Nouns
		Types of Nouns - Common Nouns - Proper Nouns
Group and Phrase Types of Groups and Phrases - Adverbial Phrases	Verbs	
	Kinds of Verbs - Action Verbs	
	Punctuation	
		Punctuation Marks - Capital Letters - Full Stops - Spaces - Question Marks - Exclamation Marks



Year 1

Text Level	Sentence Level	Word Level
Cohesion	Sentence	Adjectives
Cohesive Devices - Time Connectives - Sequence Connectives - Repeated Words	Sentence Construction - Sentences - Simple Sentences	Types of Adjectives - Descriptive Adjectives
	Types of Sentences - Questions - Exclamations / Exclamatory	Adverbs Types of Adverbs - Adverbs - Time, Place, Manner, Degree
	Group and Phrase Types of Groups and Phrases - Adverbial Phrases	Nouns Types of Nouns - Common Nouns - Proper Nouns - Singular Nouns - Plural Nouns
		Pronouns Types of Pronouns - Personal Pronouns
		Verbs Kinds of Verbs - Action Verbs - Saying Verbs
		Punctuation Punctuation Marks - Capital Letters - Full Stops - Spaces - Question Marks - Exclamation Marks



Year 2

Text Level	Sentence Level	Word Level
Paragraph	Sentence	Adjectives
Paragraph Construction - Paragraphs - Topic Sentences Paragraph Writing - Main Idea	Sentence Construction - Sentences - Simple Sentences - Compound Sentences Types of Sentences - Questions - Exclamations / Exclamatory - Statements / Declaratives - Commands / Imperatives	Types of Adjectives - Descriptive Adjectives - Quantitative Adjectives
Cohesion	Speech and Voice	Adverbs
Cohesive Devices - Time Connectives - Sequence Connectives	- Direct Speech	Types of Adverbs - Adverbs - Time, Place, Manner, Degree
	Clause	Conjunctions
	Types of Clauses - Clauses	Types of Conjunctions - Coordinating Conjunctions
	Group and Phrase	Nouns
	Types of Groups and Phrases - Adverbial Phrases - Noun Groups / Phrases	Types of Nouns - Common Nouns - Proper Nouns - Singular Nouns - Plural Nouns
		Prepositions
		Types of Prepositions - Prepositions (Time, Place, Direction)
		Pronouns
		Types of Pronouns - Personal Pronouns
		Verbs
		Kinds of Verbs - Action Verbs - Saying Verbs - Thinking Verbs - Verbs: Past / Present / Future Tense



Year 2 cont'd

Text Level	Sentence Level	Word Level
		<p>Word Origins / Building</p> <p>Word Building</p> <ul style="list-style-type: none"> - Base Words - Compound Words - Suffixes <p>Types of Words</p> <ul style="list-style-type: none"> - Synonyms - Antonyms <p>Creative and Figurative Language</p> <p>Types of Figurative Language</p> <ul style="list-style-type: none"> - Onomatopoeia <p>Literary Techniques</p> <ul style="list-style-type: none"> - Alliteration <p>Persuasive and Figurative Language</p> <p>Effects of Language Techniques</p> <ul style="list-style-type: none"> - Modality - Repetition <p>Punctuation</p> <p>Punctuation Marks</p> <ul style="list-style-type: none"> - Capital Letters - Full Stops - Spaces - Question Marks - Exclamation Marks <p>Complex Punctuation</p> <ul style="list-style-type: none"> - Comma - Apostrophes for Contractions



Text Level	Sentence Level	Word Level
Paragraph	Sentence	Adjectives
Paragraph Construction - Paragraphs - Topic Sentences Paragraph Writing - Main Idea	Sentence Construction - Sentences - Simple Sentences - Compound Sentences - Complex Sentences Types of Sentences - Questions / Interrogatives - Exclamations / Exclamatory - Statements / Declaratives - Commands / Imperatives Speech and Voice - Direct / Quotes Speech - Indirect / Reported Speech	Types of Adjectives - Descriptive Adjectives - Quantitative Adjectives - Possessive Adjectives - Proper Adjectives - Comparative Adjectives
Cohesion	Clause	Adverbs
Cohesive Devices - Time Connectives - Sequence Connectives - Repetition	Types of Clauses - Clauses - Clauses: Subject and Verb	Types of Adverbs - Adverbs - Time, Place, Manner, Degree - Fronted Adverbs
	Group and Phrase	Conjunctions
	Types of Groups and Phrases - Adverbial Phrases - Prepositional Phrases - Noun Groups / Phrases - Verb Groups / Phrases	Types of Conjunctions - Coordinating Conjunctions
		Determiners and Quantifiers Determiners
		Determiners - Determiner: Definite Article (the, a, an)
		Nouns
		Types of Nouns - Common Nouns - Proper Nouns - Collective Nouns - Singular Nouns - Plural Nouns
		Prepositions
		Types of Prepositions - Prepositions (Time, Place, Direction)
		Pronouns
		Types of Pronouns - Personal Pronouns - Possessive Pronouns



Year 3 cont'd

Text Level	Sentence Level	Word Level
		<p>Verbs</p> <p>Kinds of Verbs</p> <ul style="list-style-type: none"> - Action Verbs - Saying Verbs - Thinking Verbs - Verbs: Past / Present / Future Tense - Feeling / Wanting Verbs - Sensing / Perceiving Verbs - Relating / Linking Verbs <p>Verb Tense - Simple</p> <ul style="list-style-type: none"> - Past - Simple Tense <p>Word Origins / Building</p> <p>Word Building</p> <ul style="list-style-type: none"> - Base Words - Compound Words - Suffixes - Contractions <p>Types of Words</p> <ul style="list-style-type: none"> - Synonyms - Antonyms - Homophones <p>Creative and Figurative Language</p> <p>Types of Figurative Language</p> <ul style="list-style-type: none"> - Onomatopoeia - Simile <p>Literary Techniques</p> <ul style="list-style-type: none"> - Alliteration <p>Persuasive and Evaluative Language</p> <p>Effects of Language Techniques</p> <ul style="list-style-type: none"> - Modality



Year 3 cont'd

Text Level	Sentence Level	Word Level
		<p data-bbox="1126 443 1305 477">Punctuation</p> <p data-bbox="1126 517 1358 551">Punctuation Marks</p> <ul data-bbox="1126 562 1366 730" style="list-style-type: none">- Capital Letters- Full Stops- Spaces- Question Marks- Exclamation Marks <p data-bbox="1126 779 1294 813">Speech Marks</p> <ul data-bbox="1126 824 1461 880" style="list-style-type: none">- Quotation Marks / Inverted Commas <p data-bbox="1126 929 1342 963">Apostrophe Rules</p> <ul data-bbox="1126 974 1334 1075" style="list-style-type: none">- Apostrophes for Contractions- Commas



Year 4

Text Level	Sentence Level	Word Level
Paragraph	Sentence	Adjectives
Paragraph Construction - Paragraphs - Topic Sentences Paragraph Writing - Main Idea	Sentence Construction - Sentences - Simple Sentences - Compound Sentences - Complex Sentences Types of Sentences - Questions / Interrogatives - Exclamations / Exclamatory - Statements / Declaratives - Commands / Imperatives Speech and Voice - Direct / Quotes Speech - Indirect / Reported Speech	Types of Adjectives - Descriptive Adjectives - Quantitative Adjectives - Possessive Adjectives - Proper Adjectives - Comparative Adjectives
Cohesion	Clause	Adverbs
Cohesive Devices - Time Connectives - Sequence Connectives - Repetition - Contrast Connectives - Adding Information Connectives Cohesive Markers - Pronouns for Cohesion - Prepositions for Cohesion	Types of Clauses - Clauses - Clauses: Subject and Verb	Types of Adverbs - Adverbs - Time, Place, Manner, Degree - Fronted Adverbs
	Group and Phrase	Conjunctions
	Types of Groups and Phrases - Adverbial Phrases - Prepositional Phrases - Noun Groups / Phrases - Verb Groups / Phrases	Types of Conjunctions - Coordinating Conjunctions
		Determiners and Quantifiers Determiners
		Determiners - Determiner: Definite Article (the, a, an) - Determiner: Demonstratives - Determiner: Possessives
		Nouns
		Types of Nouns - Common Nouns - Proper Nouns - Collective Nouns - Singular Nouns - Plural Nouns
		Prepositions
		Types of Prepositions - Prepositions (Time, Place, Direction)



Year 4 cont'd

Text Level	Sentence Level	Word Level
		<p>Pronouns</p> <p>Types of Pronouns</p> <ul style="list-style-type: none"> - Personal Pronouns - Possessive Pronouns <p>Verbs</p> <p>Kinds of Verbs</p> <ul style="list-style-type: none"> - Feeling / Wanting Verbs - Sensing / Perceiving Verbs - Relating / Linking Verbs - Thinking Verbs - Summary Verbs <p>Verb Tense - Simple</p> <ul style="list-style-type: none"> - Past - Simple Tense - Future - Simple Tense <p>Verb Tense - Perfect Continuous</p> <ul style="list-style-type: none"> - Present - Continuous (Progressive) - Tense <p>Verb Tense - Perfect</p> <ul style="list-style-type: none"> - Present - Perfect Tense <p>Word Origins / Building</p> <p>Word Building</p> <ul style="list-style-type: none"> - Base Words - Compound Words - Prefixes - Suffixes - Contractions <p>Types of Words</p> <ul style="list-style-type: none"> - Synonyms - Antonyms - Homophones <p>Creative and Figurative Language</p> <p>Types of Figurative Language</p> <ul style="list-style-type: none"> - Onomatopoeia - Simile - Metaphor - Personification



Year 4 cont'd

Text Level	Sentence Level	Word Level
		<p>Literary Techniques</p> <ul style="list-style-type: none"> - Alliteration <p>Humour Techniques</p> <ul style="list-style-type: none"> - Idiom - Spoonerism and Malapropism - Puns - Nonsense Words - Neologism <p>Persuasive and Figurative Language</p> <p>Effects of Language Techniques</p> <ul style="list-style-type: none"> - Modality <p>Punctuation</p> <p>Punctuation Marks</p> <ul style="list-style-type: none"> - Question Marks - Exclamation Marks - Commas <p>Speech Marks</p> <ul style="list-style-type: none"> - Quotation Marks / Inverted Commas <p>Apostrophe Rules</p> <ul style="list-style-type: none"> - Apostrophes for Contractions - Apostrophes for Singular Possessive Nouns



Year 5

Text Level	Sentence Level	Word Level
Paragraph	Sentence	Adjectives
Paragraph Construction - Paragraphs - Topic Sentences Paragraph Writing - Main Idea - Foreshadowing	Sentence Construction - Sentences - Simple Sentences - Compound Sentences - Complex Sentences Types of Sentences - Questions / Interrogatives - Exclamations / Exclamatory - Statements / Declaratives - Commands / Imperatives Speech and Voice - Direct / Quotes Speech - Indirect / Reported Speech - Active Voice - Passive Voice	Types of Adjectives - Descriptive Adjectives - Modal Adjectives - Pointing (Demonstrative) Adjectives - Possessive Adjectives - Proper Adjectives - Comparative Adjectives - Superlative Adjectives - Classifying Adjectives - Opinion Adjectives - Factual Adjectives
Cohesion	Clause	Adverbs
Cohesive Devices - Time Connectives - Sequence Connectives - Repetition - Contrast Connectives - Compare Connectives - Adding Information Connectives - Cause and Effect Connectives - Collocation	Types of Clauses - Clauses Clause Construction - Main / Independent Clause - Subordinate / Dependent / Interrupting Clause	Types of Adverbs - Adverbs - Time, Place, Manner, Degree - Modal Adverbs
	Group and Phrase	Conjunctions
	Types of Groups and Phrases - Adverbial Phrases - Adjectival Phrases - Noun Groups / Phrases - Verb Groups / Phrases	Types of Conjunctions - Coordinating Conjunctions - Subordinating Conjunctions
		Determiners and Quantifiers
		Determiners - Determiner: Definite Article (the, a, an) - Determiner: Demonstratives - Determiner: Possessives Quantifiers - Quantifiers - Quantifiers: Numbers (Cardinal and Ordinal)
		Nouns
		Types of Nouns - Common Nouns



Year 5 cont'd

Text Level	Sentence Level	Word Level
		<p>Types of Nouns cont'd.</p> <ul style="list-style-type: none"> - Proper Nouns - Concrete Nouns - Collective Nouns - Countable and Uncountable Nouns <p>Nonconcrete Nouns</p> <ul style="list-style-type: none"> - Abstract Nouns - Modal Nouns <p>Prepositions</p> <p>Types of Prepositions</p> <ul style="list-style-type: none"> - Prepositions (Time, Place, Direction) <p>Pronouns</p> <p>Types of Pronouns</p> <ul style="list-style-type: none"> - Personal Pronouns - Possessive Pronouns <p>Nonpersonal Pronouns</p> <ul style="list-style-type: none"> - Relative Pronouns <p>Verbs</p> <p>Kinds of Verbs</p> <ul style="list-style-type: none"> - Feeling / Wanting Verbs - Sensing / Perceiving Verbs - Relating / Linking Verbs <p>Verb Tense - Simple</p> <ul style="list-style-type: none"> - Past - Simple Tense - Future - Simple Tense <p>Verb Tense - Perfect Continuous</p> <ul style="list-style-type: none"> - Present - Continuous (Progressive) - Tense <p>Verb Tense - Perfect</p> <ul style="list-style-type: none"> - Present - Perfect Tense <p>Word Origins / Building</p> <p>Word Building</p> <ul style="list-style-type: none"> - Base Words - Prefixes - Suffixes



Year 5 cont'd

Text Level	Sentence Level	Word Level
		<p>Word Building</p> <ul style="list-style-type: none"> - Base Words - Prefixes - Suffixes - Abbreviations - Contractions <p>Types of Words</p> <ul style="list-style-type: none"> - Synonyms - Antonyms - Homophones - Homonyms - Plurals <p>Word Origins</p> <ul style="list-style-type: none"> - Word Origins <p>Creative and Figurative Language</p> <p>Types of Figurative Language</p> <ul style="list-style-type: none"> - Onomatopoeia - Simile - Metaphor - Personification <p>Literary Techniques</p> <ul style="list-style-type: none"> - Alliteration <p>Humour Techniques</p> <ul style="list-style-type: none"> - Idioms - Spoonerism - Puns <p>Persuasive and Figurative Language</p> <p>Effects of Language Techniques</p> <ul style="list-style-type: none"> - Modality - Informal Language - Formal Language <p>Literal and Inferential Meaning</p> <ul style="list-style-type: none"> - Emotive Language



Year 5 cont'd

Text Level	Sentence Level	Word Level
		Punctuation
		Punctuation Marks - Commas
		Speech Marks - Quotation Marks / Inverted Commas
		Apostrophe Rules - Apostrophes for Contractions - Apostrophes for Singular Possessive Nouns - Apostrophes for Plural Regular Nouns - Apostrophes for Possession



Year 6

Text Level	Sentence Level	Word Level
<p>Paragraph</p> <p>Paragraph Construction</p> <ul style="list-style-type: none"> - Paragraphs - Topic Sentences <p>Paragraph Writing</p> <ul style="list-style-type: none"> - Main Idea - Foreshadowing 	<p>Sentence</p> <p>Sentence Construction</p> <ul style="list-style-type: none"> - Sentences - Simple Sentences - Compound Sentences - Complex Sentences <p>Types of Sentences</p> <ul style="list-style-type: none"> - Questions / Interrogatives - Exclamations / Exclamatory - Statements / Declaratives - Commands / Imperatives <p>Speech and Voice</p> <ul style="list-style-type: none"> - Direct / Quotes Speech - Indirect / Reported Speech - Active Voice - Passive Voice <p>Clause</p> <p>Types of Clauses</p> <ul style="list-style-type: none"> - Clauses <p>Clause Construction</p> <ul style="list-style-type: none"> - Main / Independent Clause - Subordinate / Dependent / Interrupting Clause <p>Group and Phrase</p> <p>Types of Groups and Phrases</p> <ul style="list-style-type: none"> - Adverbial Phrases - Adjectival Phrases - Noun Groups / Phrases - Verb Groups / Phrases - Prepositional Phrases 	<p>Adjectives</p> <p>Types of Adjectives</p> <ul style="list-style-type: none"> - Descriptive Adjectives - Modal Adjectives - Pointing (Demonstrative) Adjectives - Possessive Adjectives - Proper Adjectives - Comparative Adjectives - Superlative Adjectives - Classifying Adjectives - Opinion Adjectives - Factual Adjectives <p>Adverbs</p> <p>Types of Adverbs</p> <ul style="list-style-type: none"> - Adverbs - Time, Place, Manner, Degree - Modal Adverbs <p>Conjunctions</p> <p>Types of Conjunctions</p> <ul style="list-style-type: none"> - Coordinating Conjunctions - Subordinating Conjunctions <p>Determiners and Quantifiers Determiners</p> <p>Determiners</p> <ul style="list-style-type: none"> - Determiner: Definite Article (the, a, an) - Determiner: Demonstratives - Determiner: Possessives <p>Quantifiers</p> <ul style="list-style-type: none"> - Quantifiers - Quantifiers: Numbers (Cardinal and Ordinal) <p>Nouns</p> <p>Types of Nouns</p> <ul style="list-style-type: none"> - Common Nouns
<p>Cohesion</p> <p>Cohesive Devices</p> <ul style="list-style-type: none"> - Time Connectives - Sequence Connectives - Repetition - Contrast Connectives - Compare Connectives - Cause and Effect Connectives - Collocation <p>Discourse Markers</p> <ul style="list-style-type: none"> - Collocation <p>Cohesive Markers</p> <ul style="list-style-type: none"> - Antonyms and Synonyms for Cohesion - Repetition for Cohesion - Pronouns for Cohesion - Prepositions for Cohesion 		



Year 6 cont'd

Text Level	Sentence Level	Word Level
		<p>Types of Nouns cont'd.</p> <ul style="list-style-type: none"> - Proper Nouns - Concrete Nouns - Collective Nouns - Countable and - Uncountable Nouns <p>Nonconcrete Nouns</p> <ul style="list-style-type: none"> - Abstract Nouns - Modal Nouns <p>Prepositions</p> <p>Types of Prepositions</p> <ul style="list-style-type: none"> - Prepositions (Time, Place, Direction) <p>Pronouns</p> <p>Types of Pronouns</p> <ul style="list-style-type: none"> - Personal Pronouns - Possessive Pronouns - Reflexive Pronouns <p>Nonpersonal Pronouns</p> <ul style="list-style-type: none"> - Relative Pronouns <p>Verbs</p> <p>Kinds of Verbs</p> <ul style="list-style-type: none"> - Feeling / Wanting Verbs - Sensing / Perceiving Verbs - Relating / Linking Verbs - Action Verbs - Modal Verbs <p>Verb Tense - Simple</p> <ul style="list-style-type: none"> - Past - Simple Tense - Future - Simple Tense <p>Verb Tense - Perfect Continuous</p> <ul style="list-style-type: none"> - Present - Continuous (Progressive) - Tense <p>Verb Tense - Perfect</p> <ul style="list-style-type: none"> - Present - Perfect Tense <p>Word Origins / Building</p> <p>Word Building</p> <ul style="list-style-type: none"> - Base Words



Year 6 cont'd

Text Level	Sentence Level	Word Level
		<p>Word Building cont'd.</p> <ul style="list-style-type: none"> - Prefixes - Suffixes - Abbreviations - Contractions <p>Types of Words</p> <ul style="list-style-type: none"> - Synonyms - Antonyms - Homophones - Homonyms - Homographs <p>Word Origins</p> <ul style="list-style-type: none"> - Word Origins <p>Creative and Figurative Language</p> <p>Types of Figurative Language</p> <ul style="list-style-type: none"> - Onomatopoeia - Simile - Metaphor - Personification <p>Literary Techniques</p> <ul style="list-style-type: none"> - Alliteration - Sensory Techniques (Five Senses) <p>Humour Techniques</p> <ul style="list-style-type: none"> - Idioms - Spoonerism - Puns <p>Literary Effects</p> <ul style="list-style-type: none"> - Irony <p>Rhetorical Devices</p> <ul style="list-style-type: none"> - Hyperbole - Analogy <p>Persuasive and Evaluative Language</p> <p>Effects of Language Techniques</p> <ul style="list-style-type: none"> - Formal Language



Year 6 cont'd

Text Level	Sentence Level	Word Level
		<p>Effects of Language Techniques</p> <ul style="list-style-type: none"> - Modality - Formal Language - Informal Language - Positive Tone - Negative Tone - Repetition <p>Literal and Inferential Meaning</p> <ul style="list-style-type: none"> - Emotive Language - Connotative Language - Literal Language <p>Punctuation</p> <p>Punctuation Marks</p> <ul style="list-style-type: none"> - Commas - Semi-Colon - Colon - Dash - Hyphen - Ellipsis <p>Speech Marks</p> <ul style="list-style-type: none"> - Quotation Marks / Inverted Commas - Indirect Quote - Direct Quote <p>Apostrophe Rules</p> <ul style="list-style-type: none"> - Apostrophes for Contractions - Apostrophes for Singular Possessive Nouns - Apostrophes for Plural Regular Nouns - Apostrophes for Possession



Text Level	Sentence Level	Word Level
Paragraph	Sentence	Adjectives
<p>Paragraph Construction</p> <ul style="list-style-type: none"> - All About Paragraphs - Topic Sentences - Supporting (Example) Sentences - Quotations / Evidence - Substantiation (Explanatory) Sentences <p>Paragraph Writing</p> <ul style="list-style-type: none"> - Main Idea - Foreshadowing - Overviews / Summaries 	<p>Sentence Construction</p> <ul style="list-style-type: none"> - Sentences - Simple Sentences - Compound Sentences - Complex Sentences <p>Types of Sentences</p> <ul style="list-style-type: none"> - Questions / Interrogatives - Exclamations / Exclamatory - Statements / Declaratives - Commands / Imperatives - Affirmative - Commands / Imperatives - Negative - Rhetorical Questions <p>Sentence Forms</p> <ul style="list-style-type: none"> - Formal Sentences - Informal Sentences - Mood - Parallel Structure / Parallelism <p>Speech and Voice</p> <ul style="list-style-type: none"> - Direct / Quotes Speech - Indirect / Reported Speech - Active Voice and Passive Voice - Author Voice - Narrative Voice (first- and third-person) 	<p>Types of Adjectives</p> <ul style="list-style-type: none"> - Descriptive Adjectives - Modal Adjectives - Interrogative Adjectives - Possessive Adjectives - Proper Adjectives - Comparative Adjectives - Superlative Adjectives - Classifying Adjectives - Opinion Adjectives - Factual Adjectives - Adjectives - Word Order
Cohesion		Adverbs
<p>Cohesive Devices</p> <ul style="list-style-type: none"> - Time Connectives - Sequence Connectives - Contrast Connectives - Compare Connectives - Cause and Effect Connectives - Clarifying and Illustrating Connectives <p>Cohesive Ties</p> <ul style="list-style-type: none"> - Place and Space Connectives - Qualifying Connectives - Emphasising Connectives - Adding Information Connectives - Condition Connectives - Concession Connectives - Example Connectives <p>Cohesive Markers</p> <ul style="list-style-type: none"> - Antonyms and Synonyms for Cohesion - Repetition for Cohesion - Pronouns for Cohesion - Prepositions for Cohesion 		<p>Types of Adverbs</p> <ul style="list-style-type: none"> - Modal Adverbs - Interrogative Adverbs - Conunctive Adverbs - Comparative Adverbs - superlatives Adverbs
		Conjunctions
		Types of Conjunctions
		<ul style="list-style-type: none"> - Coordinating Conjunctions - Subordinating Conjunctions - Correlative Conjunctions
		Determiners and Quantifiers Determiners
		Determiners
		<ul style="list-style-type: none"> - Determiner: Definite Article (the) - Determiner: Indefinite Article (a, an) - Determiner: Demonstratives - Determiner: Possessives - Determiner: Interrogatives
		Quantifiers
		<ul style="list-style-type: none"> - Quantifiers - Quantifiers: Numbers (Cardinal and Ordinal)
	Clause	
	Clause Construction	
	<ul style="list-style-type: none"> - Main / Independent Clause - Subordinate / Dependent / Interrupting Clause - Misplaced Modifiers - Dangling Modifiers - Dangling Participles 	
	Types of Clauses	
	<ul style="list-style-type: none"> - All About Clauses - Noun Clauses - Adverbial Clauses 	



Year 7 cont'd

Text Level	Sentence Level	Word Level
	<p>Types of Clauses cont'd.</p> <ul style="list-style-type: none"> - Adjective Clauses - Relative Clauses - Non-Finite Clauses <p>Clause Structure</p> <ul style="list-style-type: none"> - Direct Objects - Indirect Objects - Prepositional Objects - Theme - Rheme 	<p>Nouns</p> <p>Types of Nouns</p> <ul style="list-style-type: none"> - Common Nouns - Proper Nouns - Concrete Nouns - Collective Nouns - Countable and - Uncountable Nouns <p>Nonconcrete Nouns</p> <ul style="list-style-type: none"> - Abstract Nouns - Modal Nouns
	<p>Group and Phrase</p> <p>Phrase Construction</p> <ul style="list-style-type: none"> - Noun Groups / Phrases - Verb Groups / Phrases - Complement - Phrasal Verbs - Nominalisation <p>Types of Groups and Phrases</p> <ul style="list-style-type: none"> - Adverbial Phrases - Adjectival Phrases - Prepositional Phrases - Participle Phrases - Gerund Phrases - Foreign Phrases 	<p>Prepositions</p> <p>Types of Prepositions</p> <ul style="list-style-type: none"> - Prepositions (Time, Place, Direction) <p>Pronouns</p> <p>Types of Pronouns</p> <ul style="list-style-type: none"> - Personal Pronouns - Subject (Nominative) Pronouns - Object (Accusative) Pronouns - Possessive (Gentive) Pronouns - Reflexive and Emphatic Pronouns - Intensive Pronouns - Reciprocal Pronouns <p>Nonpersonal Pronouns</p> <ul style="list-style-type: none"> - Relative Pronouns - Indefinite Pronouns - Negative Pronouns - Demonstrative Pronouns - Interrogative Pronouns
		<p>Verbs</p> <p>Kinds of Verbs</p> <ul style="list-style-type: none"> - Being Verbs (to be) - Possessive Verbs (to have)



Year 7 cont'd

Text Level	Sentence Level	Word Level
		<p>Kinds of Verbs cont'd.</p> <ul style="list-style-type: none"> - Regular Verbs - Irregular Verbs - Direct Objects - Indirect Objects - Modal Verbs <p>Verb Tense - Simple</p> <ul style="list-style-type: none"> - Past Simple Tense - Present Simple Tense - Future Simple Tense <p>Verb Tense - Continuous</p> <ul style="list-style-type: none"> - Past Continuous (Progressive) Tense - Present Continuous (Progressive) Tense - Future Continuous (Progressive) Tense <p>Verb Tense - Perfect</p> <ul style="list-style-type: none"> - Past Perfect Tense - Present Perfect Tense - Future Perfect Tense <p>Verb Tense - Perfect Continuous</p> <ul style="list-style-type: none"> - Past Perfect Continuous (Progressive) Tense - Present Perfect Continuous (Progressive) Tense - Future Perfect Continuous (Progressive) Tense <p>Types of Verbs</p> <ul style="list-style-type: none"> - Transitive Verbs - Intransitive Verbs - Auxiliary Verbs - Infinitive Verbs - Finite Verbs - Participles - Present and Past - Inversion / Emphasis <p>Verb Voice</p> <ul style="list-style-type: none"> - Active Verbs - Passive Verbs



Year 7 cont'd

Text Level	Sentence Level	Word Level
		<p>Word Origins / Building</p> <p>Word Origins</p> <ul style="list-style-type: none"> - Word Origins - Foreign Words - Inflection - Derivation <p>Word Building</p> <ul style="list-style-type: none"> - Prefixes - Suffixes <p>Types of Words</p> <ul style="list-style-type: none"> - Synonyms - Antonyms - Homophones - Homonyms - Homographs - Superlatives - Comparatives <p>Syllabic Words</p> <ul style="list-style-type: none"> - Monosyllabic Words - Polysyllabic Words - Multisyllabic Words <p>Abbreviated Words</p> <ul style="list-style-type: none"> - Abbreviations - Contractions - Acronyms - Initialisms <p>Creative and Figurative Language</p> <p>Types of Figurative Language</p> <ul style="list-style-type: none"> - Onomatopoeia - Simile - Metaphor - Personification - Metonymy - Oxymoron <p>Literary Effects</p> <ul style="list-style-type: none"> - Irony - Situational - Irony - Dramatic - Irony - Verbal - Paradox - Satire



Year 7 cont'd

Text Level	Sentence Level	Word Level
		<p>Literary Effects cont'd.</p> <ul style="list-style-type: none"> - Extended Metaphors <p>Literary Techniques</p> <ul style="list-style-type: none"> - Cliches - Diction - Colloquialism - Consonance - Alliteration - Rhyme - Rhythm <p>Humour Techniques</p> <ul style="list-style-type: none"> - Sarcasm - Parody - Understatements / Litotoes - Puns - Idioms - Spoonerism and Malapropism <p>Rhetorical Techniques</p> <ul style="list-style-type: none"> - Analogy - Hyperbole - Literary Allusion - Biblical Allusion - Mythological Allusion <p>Persuasive and Evaluative Language</p> <p>Effects of Language Techniques</p> <ul style="list-style-type: none"> - Modality - Repetition (Rule of Three) - Evaluative Adverbs - Positive Tone - Negative Tone - Informal Language - Formal Language <p>Literal and Inferential Meaning</p> <ul style="list-style-type: none"> - Euphemisms - Emotive Language - Connotative Language - Denotative Language - Evocative Language



Year 7 cont'd

Text Level	Sentence Level	Word Level
		<p>Punctuation</p> <p>Punctuation Marks</p> <ul style="list-style-type: none"> - Commas - Semi-Colon - Colon - Dash - Hyphen - Ellipsis <p>Speech Marks</p> <ul style="list-style-type: none"> - Quotation Marks / Inverted Commas - Indirect Quote - Direct Quote <p>Apostrophe Rules</p> <ul style="list-style-type: none"> - Apostrophes for Contractions - Apostrophes for Singular Possessive Nouns - Apostrophes for Plural Regular Nouns - Apostrophes for Possession



Text Level	Sentence Level	Word Level
<p>Paragraph</p> <p>Paragraph Construction</p> <ul style="list-style-type: none"> - All About Paragraphs - Topic Sentences - Supporting (Example) Sentences - Quotations / Evidence - Substantiation (Explanatory) Sentences <p>Paragraph Writing</p> <ul style="list-style-type: none"> - Main Idea - Foreshadowing - Overviews / Summaries <p>Cohesion</p> <p>Cohesive Devices</p> <ul style="list-style-type: none"> - Time / Temporal Connectives - Sequence Connectives - Contrast Connectives - Compare Connectives - Cause and Effect Connectives - Clarifying and Illustrating Connectives <p>Cohesive Ties</p> <ul style="list-style-type: none"> - Place and Space Connectives - Qualifying Connectives - Emphasising Connectives - Adding Information Connectives - Condition Connectives - Concession Connectives - Example Connectives <p>Cohesive Markers</p> <ul style="list-style-type: none"> - Antonyms and Synonyms for Cohesion - Repetition for Cohesion - Pronouns for Cohesion - Prepositions for Cohesion 	<p>Sentence</p> <p>Sentence Construction</p> <ul style="list-style-type: none"> - Sentences - Simple Sentences - Compound Sentences - Complex Sentences <p>Types of Sentences</p> <ul style="list-style-type: none"> - Questions / Interrogatives - Exclamations / Exclamatory - Statements / Declaratives - Commands / Imperatives - Affirmative - Commands / Imperatives - Negative - Rhetorical Questions <p>Sentence Forms</p> <ul style="list-style-type: none"> - Formal Sentences - Informal Sentences - Mood - Parallel Structure / Parallelism <p>Speech and Voice</p> <ul style="list-style-type: none"> - Direct / Quotes Speech - Indirect / Reported Speech - Active Voice and Passive Voice - Author Voice - Narrative Voice (first- and third-person) <p>Clause</p> <p>Clause Construction</p> <ul style="list-style-type: none"> - Main / Independent Clause - Subordinate / Dependent / Interrupting Clause - Misplaced Modifiers - Dangling Modifiers - Dangling Participles <p>Types of Clauses</p> <ul style="list-style-type: none"> - All About Clauses - Noun Clauses - Adverbial Clauses 	<p>Adjectives</p> <p>Types of Adjectives</p> <ul style="list-style-type: none"> - Descriptive Adjectives - Modal Adjectives - Interrogative Adjectives - Possessive Adjectives - Proper Adjectives - Comparative Adjectives - Superlative Adjectives - Classifying Adjectives - Opinion Adjectives - Factual Adjectives - Adjectives - Word Order <p>Adverbs</p> <p>Types of Adverbs</p> <ul style="list-style-type: none"> - Modal Adverbs - Interrogative Adverbs - Conunctive Adverbs - Comparative Adverbs - superlatives Adverbs <p>Conjunctions</p> <p>Types of Conjunctions</p> <ul style="list-style-type: none"> - Coordinating Conjunctions - Subordinating Conjunctions - Correlative Conjunctions <p>Determiners and Quantifiers Determiners</p> <p>Determiners</p> <ul style="list-style-type: none"> - Determiner: Definite Article (the) - Determiner: Indefinite Article (a, an) - Determiner: Demonstratives - Determiner: Possessives - Determiner: Interrogatives <p>Quantifiers</p> <ul style="list-style-type: none"> - Quantifiers - Quantifiers: Numbers (Cardinal and Ordinal)



Year 8 cont'd

Text Level	Sentence Level	Word Level
	<p>Types of Clauses cont'd.</p> <ul style="list-style-type: none"> - Adjective Clauses - Relative Clauses - Non-Finite Clauses <p>Clause Structure</p> <ul style="list-style-type: none"> - Direct Objects - Indirect Objects - Prepositional Objects - Theme - Rheme 	<p>Nouns</p> <p>Types of Nouns</p> <ul style="list-style-type: none"> - Common Nouns - Proper Nouns - Concrete Nouns - Collective Nouns - Countable and - Uncountable Nouns <p>Nonconcrete Nouns</p> <ul style="list-style-type: none"> - Abstract Nouns - Modal Nouns
	<p>Group and Phrase</p> <p>Phrase Construction</p> <ul style="list-style-type: none"> - Noun Groups / Phrases - Verb Groups / Phrases - Complement - Phrasal Verbs - Nominalisation <p>Types of Groups and Phrases</p> <ul style="list-style-type: none"> - Adverbial Phrases - Adjectival Phrases - Prepositional Phrases - Participle Phrases - Gerund Phrases - Foreign Phrases 	<p>Prepositions</p> <p>Types of Prepositions</p> <ul style="list-style-type: none"> - Prepositions (Time, Place, Direction) <p>Pronouns</p> <p>Types of Pronouns</p> <ul style="list-style-type: none"> - Personal Pronouns - Subject (Nominative) Pronouns - Object (Accusative) Pronouns - Possessive (Gentive) Pronouns - Reflexive and Emphatic Pronouns - Intensive Pronouns - Reciprocal Pronouns <p>Nonpersonal Pronouns</p> <ul style="list-style-type: none"> - Relative Pronouns - Indefinite Pronouns - Negative Pronouns - Demonstrative Pronouns - Interrogative Pronouns
		<p>Verbs</p> <p>Kinds of Verbs</p> <ul style="list-style-type: none"> - Being Verbs (to be) - Possessive Verbs (to have)



Year 8 cont'd

Text Level	Sentence Level	Word Level
		<p>Kinds of Verbs cont'd.</p> <ul style="list-style-type: none"> - Regular Verbs - Irregular Verbs - Direct Objects - Indirect Objects - Modal Verbs <p>Verb Tense - Simple</p> <ul style="list-style-type: none"> - Past Simple Tense - Present Simple Tense - Future Simple Tense <p>Verb Tense - Continuous</p> <ul style="list-style-type: none"> - Past Continuous (Progressive) Tense - Present Continuous (Progressive) Tense - Future Continuous (Progressive) Tense <p>Verb Tense - Perfect</p> <ul style="list-style-type: none"> - Past Perfect Tense - Present Perfect Tense - Future Perfect Tense <p>Verb Tense - Perfect Continuous</p> <ul style="list-style-type: none"> - Past Perfect Continuous (Progressive) Tense - Present Perfect Continuous (Progressive) Tense - Future Perfect Continuous (Progressive) Tense <p>Types of Verbs</p> <ul style="list-style-type: none"> - Transitive Verbs - Intransitive Verbs - Auxiliary Verbs - Infinitive Verbs - Finite Verbs - Participles - Present and Past - Inversion / Emphasis <p>Verb Voice</p> <ul style="list-style-type: none"> - Active Verbs - Passive Verbs



Year 8 cont'd

Text Level	Sentence Level	Word Level
		<p>Word Origins / Building</p> <p>Word Origins</p> <ul style="list-style-type: none"> - Word Origins - Foreign Words - Inflection - Derivation <p>Word Building</p> <ul style="list-style-type: none"> - Prefixes - Suffixes <p>Types of Words</p> <ul style="list-style-type: none"> - Synonyms - Antonyms - Homophones - Homonyms - Homographs - Superlatives - Comparatives <p>Syllabic Words</p> <ul style="list-style-type: none"> - Monosyllabic Words - Polysyllabic Words - Multisyllabic Words <p>Abbreviated Words</p> <ul style="list-style-type: none"> - Abbreviations - Contractions - Acronyms - Initialisms <p>Creative and Figurative Language</p> <p>Types of Figurative Language</p> <ul style="list-style-type: none"> - Onomatopoeia - Simile - Metaphor - Personification - Metonymy - Oxymoron <p>Literary Effects</p> <ul style="list-style-type: none"> - Irony - Situational - Irony - Dramatic - Irony - Verbal - Paradox - Satire



Year 8 cont'd

Text Level	Sentence Level	Word Level
		<p>Literary Effects cont'd.</p> <ul style="list-style-type: none"> - Extended Metaphors <p>Literary Techniques</p> <ul style="list-style-type: none"> - Cliches - Diction - Colloquialism - Consonance - Alliteration - Rhyme - Rhythm <p>Humour Techniques</p> <ul style="list-style-type: none"> - Sarcasm - Parody - Understatements / Litotoes - Puns - Idioms - Spoonerism and Malapropism <p>Rhetorical Techniques</p> <ul style="list-style-type: none"> - Analogy - Hyperbole - Literary Allusion - Biblical Allusion - Mythological Allusion <p>Persuasive and Evaluative Language</p> <p>Effects of Language Techniques</p> <ul style="list-style-type: none"> - Modality - Repetition (Rule of Three) - Evaluative Adverbs - Positive Tone - Negative Tone - Informal Language - Formal Language <p>Literal and Inferential Meaning</p> <ul style="list-style-type: none"> - Euphemisms - Emotive Language - Connotative Language - Denotative Language - Evocative Language



Year 8 cont'd

Text Level	Sentence Level	Word Level
		<p>Punctuation</p> <p>Punctuation Marks</p> <ul style="list-style-type: none"> - Commas - Semi-Colon - Colon - Dash - Hyphen - Ellipsis <p>Speech Marks</p> <ul style="list-style-type: none"> - Quotation Marks / Inverted Commas - Indirect Quote - Direct Quote <p>Apostrophe Rules</p> <ul style="list-style-type: none"> - Apostrophes for Contractions - Apostrophes for Singular Possessive Nouns - Apostrophes for Plural Regular Nouns - Apostrophes for Possession



Year 9 cont'd

Text Level	Sentence Level	Word Level
Paragraph	Sentence	Adjectives
<p>Paragraph Construction</p> <ul style="list-style-type: none"> - All About Paragraphs - Topic Sentences - Supporting (Example) Sentences - Quotations / Evidence - Substantiation (Explanatory) Sentences <p>Paragraph Writing</p> <ul style="list-style-type: none"> - Main Idea - Foreshadowing - Overviews / Summaries 	<p>Sentence Construction</p> <ul style="list-style-type: none"> - Sentences - Simple Sentences - Compound Sentences - Complex Sentences <p>Types of Sentences</p> <ul style="list-style-type: none"> - Questions / Interrogatives - Exclamations / Exclamatory - Statements / Declaratives - Commands / Imperatives - Affirmative - Commands / Imperatives - Negative - Rhetorical Questions <p>Sentence Forms</p> <ul style="list-style-type: none"> - Formal Sentences - Informal Sentences - Mood - Parallel Structure / Parallelism <p>Speech and Voice</p> <ul style="list-style-type: none"> - Direct / Quoted Speech - Indirect / Reported Speech - Active Voice and Passive Voice - Author Voice - Narrative Voice (first- and third-person) 	<p>Types of Adjectives</p> <ul style="list-style-type: none"> - Descriptive Adjectives - Modal Adjectives - Interrogative Adjectives - Possessive Adjectives - Proper Adjectives - Comparative Adjectives - Superlative Adjectives - Classifying Adjectives - Opinion Adjectives - Factual Adjectives - Adjectives - Word Order
Cohesion		Adverbs
<p>Cohesive Devices</p> <ul style="list-style-type: none"> - Time / Temporal Connectives - Sequence Connectives - Contrast Connectives - Compare Connectives - Cause and Effect Connectives - Clarifying and Illustrating Connectives <p>Cohesive Ties</p> <ul style="list-style-type: none"> - Place and Space Connectives - Qualifying Connectives - Emphasising Connectives - Adding Information Connectives - Condition Connectives - Concession Connectives - Example Connectives <p>Cohesive Markers</p> <ul style="list-style-type: none"> - Antonyms and Synonyms for Cohesion - Repetition for Cohesion - Pronouns for Cohesion - Prepositions for Cohesion 	<p>Clause</p> <p>Clause Construction</p> <ul style="list-style-type: none"> - Main / Independent Clause - Subordinate / Dependent / Interrupting Clause - Misplaced Modifiers - Dangling Modifiers - Dangling Participles <p>Types of Clauses</p> <ul style="list-style-type: none"> - All About Clauses - Noun Clauses - Adverbial Clauses 	<p>Types of Adverbs</p> <ul style="list-style-type: none"> - Modal Adverbs - Interrogative Adverbs - Conunctive Adverbs - Comparative Adverbs - superlatives Adverbs
		Conjunctions
		Types of Conjunctions
		<ul style="list-style-type: none"> - Coordinating Conjunctions - Subordinating Conjunctions - Correlative Conjunctions
		Determiners and Quantifiers Determiners
		Determiners
		<ul style="list-style-type: none"> - Determiner: Definite Article (the) - Determiner: Indefinite Article (a, an) - Determiner: Demonstratives - Determiner: Possessives - Determiner: Interrogatives
		Quantifiers
		<ul style="list-style-type: none"> - Quantifiers - Quantifiers: Numbers (Cardinal and Ordinal)



Year 9 cont'd

Text Level	Sentence Level	Word Level
	<p>Types of Clauses cont'd.</p> <ul style="list-style-type: none"> - Adjective Clauses - Relative Clauses - Non-Finite Clauses <p>Clause Structure</p> <ul style="list-style-type: none"> - Direct Objects - Indirect Objects - Prepositional Objects - Theme - Rheme 	<p>Nouns</p> <p>Types of Nouns</p> <ul style="list-style-type: none"> - Common Nouns - Proper Nouns - Concrete Nouns - Collective Nouns - Countable and - Uncountable Nouns <p>Nonconcrete Nouns</p> <ul style="list-style-type: none"> - Abstract Nouns - Modal Nouns
	<p>Group and Phrase</p> <p>Phrase Construction</p> <ul style="list-style-type: none"> - Noun Groups / Phrases - Verb Groups / Phrases - Complement - Phrasal Verbs - Nominalisation <p>Types of Groups and Phrases</p> <ul style="list-style-type: none"> - Adverbial Phrases - Adjectival Phrases - Prepositional Phrases - Participle Phrases - Gerund Phrases - Foreign Phrases 	<p>Prepositions</p> <p>Types of Prepositions</p> <ul style="list-style-type: none"> - Prepositions (Time, Place, Direction) <p>Pronouns</p> <p>Types of Pronouns</p> <ul style="list-style-type: none"> - Personal Pronouns - Subject (Nominative) Pronouns - Object (Accusative) Pronouns - Possessive (Gentive) Pronouns - Reflexive and Emphatic Pronouns - Intensive Pronouns - Reciprocal Pronouns <p>Nonpersonal Pronouns</p> <ul style="list-style-type: none"> - Relative Pronouns - Indefinite Pronouns - Negative Pronouns - Demonstrative Pronouns - Interrogative Pronouns
		<p>Verbs</p> <p>Kinds of Verbs</p> <ul style="list-style-type: none"> - Being Verbs (to be) - Possessive Verbs (to have)



Year 9 cont'd

Text Level	Sentence Level	Word Level
		<p>Kinds of Verbs cont'd.</p> <ul style="list-style-type: none"> - Regular Verbs - Irregular Verbs - Direct Objects - Indirect Objects - Modal Verbs <p>Verb Tense - Simple</p> <ul style="list-style-type: none"> - Past Simple Tense - Present Simple Tense - Future Simple Tense <p>Verb Tense - Continuous</p> <ul style="list-style-type: none"> - Past Continuous (Progressive) Tense - Present Continuous (Progressive) Tense - Future Continuous (Progressive) Tense <p>Verb Tense - Perfect</p> <ul style="list-style-type: none"> - Past Perfect Tense - Present Perfect Tense - Future Perfect Tense <p>Verb Tense - Perfect Continuous</p> <ul style="list-style-type: none"> - Past Perfect Continuous (Progressive) Tense - Present Perfect Continuous (Progressive) Tense - Future Perfect Continuous (Progressive) Tense <p>Types of Verbs</p> <ul style="list-style-type: none"> - Transitive Verbs - Intransitive Verbs - Auxiliary Verbs - Infinitive Verbs - Finite Verbs - Participles - Present and Past - Inversion / Emphasis <p>Verb Voice</p> <ul style="list-style-type: none"> - Active Verbs - Passive Verbs



Year 9 cont'd

Text Level	Sentence Level	Word Level
		<p>Word Origins / Building</p> <p>Word Origins</p> <ul style="list-style-type: none"> - Word Origins - Foreign Words - Inflection - Derivation <p>Word Building</p> <ul style="list-style-type: none"> - Prefixes - Suffixes <p>Types of Words</p> <ul style="list-style-type: none"> - Synonyms - Antonyms - Homophones - Homonyms - Homographs - Superlatives - Comparatives <p>Syllabic Words</p> <ul style="list-style-type: none"> - Monosyllabic Words - Polysyllabic Words - Multisyllabic Words <p>Abbreviated Words</p> <ul style="list-style-type: none"> - Abbreviations - Contractions - Acronyms - Initialisms <p>Creative and Figurative Language</p> <p>Types of Figurative Language</p> <ul style="list-style-type: none"> - Onomatopoeia - Simile - Metaphor - Personification - Metonymy - Oxymoron <p>Literary Effects</p> <ul style="list-style-type: none"> - Irony - Situational - Irony - Dramatic - Irony - Verbal - Paradox - Satire



Year 9 cont'd

Text Level	Sentence Level	Word Level
		<p>Literary Effects cont'd.</p> <ul style="list-style-type: none"> - Extended Metaphors <p>Literary Techniques</p> <ul style="list-style-type: none"> - Cliches - Diction - Colloquialism - Consonance - Alliteration - Rhyme - Rhythm <p>Humour Techniques</p> <ul style="list-style-type: none"> - Sarcasm - Parody - Understatements / Litotoes - Puns - Idioms - Spoonerism and Malapropism <p>Rhetorical Techniques</p> <ul style="list-style-type: none"> - Analogy - Hyperbole - Literary Allusion - Biblical Allusion - Mythological Allusion <p>Persuasive and Evaluative Language</p> <p>Effects of Language Techniques</p> <ul style="list-style-type: none"> - Modality - Repetition (Rule of Three) - Evaluative Adverbs - Positive Tone - Negative Tone - Informal Language - Formal Language <p>Literal and Inferential Meaning</p> <ul style="list-style-type: none"> - Euphemisms - Emotive Language - Connotative Language - Denotative Language - Evocative Language



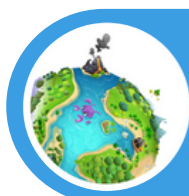
Year 9 cont'd.

Text Level	Sentence Level	Word Level
		<p>Punctuation</p> <p>Punctuation Marks</p> <ul style="list-style-type: none"> - Commas - Semi-Colon - Colon - Dash - Hyphen - Ellipsis <p>Speech Marks</p> <ul style="list-style-type: none"> - Quotation Marks / Inverted Commas - Indirect Quote - Direct Quote <p>Apostrophe Rules</p> <ul style="list-style-type: none"> - Apostrophes for Contractions - Apostrophes for Singular Possessive Nouns - Apostrophes for Plural Regular Nouns - Apostrophes for Possession



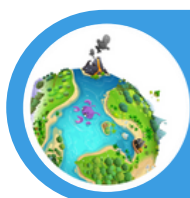
Year 10

Text Level	Sentence Level	Word Level
<p>Paragraph</p> <p>Paragraph Construction</p> <ul style="list-style-type: none"> - All About Paragraphs - Topic Sentences - Supporting (Example) Sentences - Quotations / Evidence - Substantiation (Explanatory) Sentences <p>Paragraph Writing</p> <ul style="list-style-type: none"> - Main Idea - Foreshadowing - Overviews / Summaries <p>Cohesion</p> <p>Cohesive Devices</p> <ul style="list-style-type: none"> - Time / Temporal Connectives - Sequence Connectives - Contrast Connectives - Compare Connectives - Cause and Effect Connectives - Clarifying and Illustrating Connectives <p>Cohesive Ties</p> <ul style="list-style-type: none"> - Place and Space Connectives - Qualifying Connectives - Emphasising Connectives - Adding Information Connectives - Condition Connectives - Concession Connectives - Example Connectives <p>Cohesive Markers</p> <ul style="list-style-type: none"> - Antonyms and Synonyms for Cohesion - Repetition for Cohesion - Pronouns for Cohesion - Prepositions for Cohesion 	<p>Sentence</p> <p>Sentence Construction</p> <ul style="list-style-type: none"> - Sentences - Simple Sentences - Compound Sentences - Complex Sentences <p>Types of Sentences</p> <ul style="list-style-type: none"> - Questions / Interrogatives - Exclamations / Exclamatory - Statements / Declaratives - Commands / Imperatives - Affirmative - Commands / Imperatives - Negative - Rhetorical Questions <p>Sentence Forms</p> <ul style="list-style-type: none"> - Formal Sentences - Informal Sentences - Mood - Parallel Structure / Parallelism <p>Speech and Voice</p> <ul style="list-style-type: none"> - Direct / Quotes Speech - Indirect / Reported Speech - Active Voice and Passive Voice - Author Voice - Narrative Voice (first- and third-person) <p>Clause</p> <p>Clause Construction</p> <ul style="list-style-type: none"> - Main / Independent Clause - Subordinate / Dependent / Interrupting Clause - Misplaced Modifiers - Dangling Modifiers - Dangling Participles <p>Types of Clauses</p> <ul style="list-style-type: none"> - All About Clauses - Noun Clauses - Adverbial Clauses 	<p>Adjectives</p> <p>Types of Adjectives</p> <ul style="list-style-type: none"> - Descriptive Adjectives - Modal Adjectives - Interrogative Adjectives - Possessive Adjectives - Proper Adjectives - Comparative Adjectives - Superlative Adjectives - Classifying Adjectives - Opinion Adjectives - Factual Adjectives - Adjectives - Word Order <p>Adverbs</p> <p>Types of Adverbs</p> <ul style="list-style-type: none"> - Modal Adverbs - Interrogative Adverbs - Conunctive Adverbs - Comparative Adverbs - superlatives Adverbs <p>Conjunctions</p> <p>Types of Conjunctions</p> <ul style="list-style-type: none"> - Coordinating Conjunctions - Subordinating Conjunctions - Correlative Conjunctions <p>Determiners and Quantifiers Determiners</p> <p>Determiners</p> <ul style="list-style-type: none"> - Determiner: Definite Article (the) - Determiner: Indefinite Article (a, an) - Determiner: Demonstratives - Determiner: Possessives - Determiner: Interrogatives <p>Quantifiers</p> <ul style="list-style-type: none"> - Quantifiers - Quantifiers: Numbers (Cardinal and Ordinal)



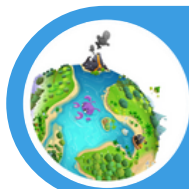
Year 10 cont'd

Text Level	Sentence Level	Word Level
	<p>Types of Clauses cont'd.</p> <ul style="list-style-type: none"> - Adjective Clauses - Relative Clauses - Non-Finite Clauses <p>Clause Structure</p> <ul style="list-style-type: none"> - Direct Objects - Indirect Objects - Prepositional Objects - Theme - Rheme 	<p>Nouns</p> <p>Types of Nouns</p> <ul style="list-style-type: none"> - Common Nouns - Proper Nouns - Concrete Nouns - Collective Nouns - Countable and - Uncountable Nouns <p>Nonconcrete Nouns</p> <ul style="list-style-type: none"> - Abstract Nouns - Modal Nouns
	<p>Group and Phrase</p> <p>Phrase Construction</p> <ul style="list-style-type: none"> - Noun Groups / Phrases - Verb Groups / Phrases - Complement - Phrasal Verbs - Nominalisation <p>Types of Groups and Phrases</p> <ul style="list-style-type: none"> - Adverbial Phrases - Adjectival Phrases - Prepositional Phrases - Participle Phrases - Gerund Phrases - Foreign Phrases 	<p>Prepositions</p> <p>Types of Prepositions</p> <ul style="list-style-type: none"> - Prepositions (Time, Place, Direction) <p>Pronouns</p> <p>Types of Pronouns</p> <ul style="list-style-type: none"> - Personal Pronouns - Subject (Nominative) Pronouns - Object (Accusative) Pronouns - Possessive (Gentive) Pronouns - Reflexive and Emphatic Pronouns - Intensive Pronouns - Reciprocal Pronouns <p>Nonpersonal Pronouns</p> <ul style="list-style-type: none"> - Relative Pronouns - Indefinite Pronouns - Negative Pronouns - Demonstrative Pronouns - Interrogative Pronouns
		<p>Verbs</p> <p>Kinds of Verbs</p> <ul style="list-style-type: none"> - Being Verbs (to be) - Possessive Verbs (to have)



Year 10 cont'd

Text Level	Sentence Level	Word Level
		<p>Kinds of Verbs cont'd.</p> <ul style="list-style-type: none"> - Regular Verbs - Irregular Verbs - Direct Objects - Indirect Objects - Modal Verbs <p>Verb Tense - Simple</p> <ul style="list-style-type: none"> - Past Simple Tense - Present Simple Tense - Future Simple Tense <p>Verb Tense - Continuous</p> <ul style="list-style-type: none"> - Past Continuous (Progressive) Tense - Present Continuous (Progressive) Tense - Future Continuous (Progressive) Tense <p>Verb Tense - Perfect</p> <ul style="list-style-type: none"> - Past Perfect Tense - Present Perfect Tense - Future Perfect Tense <p>Verb Tense - Perfect Continuous</p> <ul style="list-style-type: none"> - Past Perfect Continuous (Progressive) Tense - Present Perfect Continuous (Progressive) Tense - Future Perfect Continuous (Progressive) Tense <p>Types of Verbs</p> <ul style="list-style-type: none"> - Transitive Verbs - Intransitive Verbs - Auxiliary Verbs - Infinitive Verbs - Finite Verbs - Participles - Present and Past - Inversion / Emphasis <p>Verb Voice</p> <ul style="list-style-type: none"> - Active Verbs - Passive Verbs



Year 10 cont'd

Text Level	Sentence Level	Word Level
		<p>Word Origins / Building</p> <p>Word Origins</p> <ul style="list-style-type: none"> - Word Origins - Foreign Words - Inflection - Derivation <p>Word Building</p> <ul style="list-style-type: none"> - Prefixes - Suffixes <p>Types of Words</p> <ul style="list-style-type: none"> - Synonyms - Antonyms - Homophones - Homonyms - Homographs - Superlatives - Comparatives <p>Syllabic Words</p> <ul style="list-style-type: none"> - Monosyllabic Words - Polysyllabic Words - Multisyllabic Words <p>Abbreviated Words</p> <ul style="list-style-type: none"> - Abbreviations - Contractions - Acronyms - Initialisms <p>Creative and Figurative Language</p> <p>Types of Figurative Language</p> <ul style="list-style-type: none"> - Onomatopoeia - Simile - Metaphor - Personification - Metonymy - Oxymoron <p>Literary Effects</p> <ul style="list-style-type: none"> - Irony - Situational - Irony - Dramatic - Irony - Verbal - Paradox - Satire



Year 10 cont'd

Text Level	Sentence Level	Word Level
		<p>Literary Effects cont'd.</p> <ul style="list-style-type: none"> - Extended Metaphors <p>Literary Techniques</p> <ul style="list-style-type: none"> - Cliches - Diction - Colloquialism - Consonance - Alliteration - Rhyme - Rhythm <p>Humour Techniques</p> <ul style="list-style-type: none"> - Sarcasm - Parody - Understatements / Litotoes - Puns - Idioms - Spoonerism and Malapropism <p>Rhetorical Techniques</p> <ul style="list-style-type: none"> - Analogy - Hyperbole - Literary Allusion - Biblical Allusion - Mythological Allusion <p>Persuasive and Evaluative Language</p> <p>Effects of Language Techniques</p> <ul style="list-style-type: none"> - Modality - Repetition (Rule of Three) - Evaluative Adverbs - Positive Tone - Negative Tone - Informal Language - Formal Language <p>Literal and Inferential Meaning</p> <ul style="list-style-type: none"> - Euphemisms - Emotive Language - Connotative Language - Denotative Language - Evocative Language



Year 10 cont'd

Text Level	Sentence Level	Word Level
		<p>Punctuation</p> <p>Punctuation Marks</p> <ul style="list-style-type: none"> - Commas - Semi-Colon - Colon - Dash - Hyphen - Ellipsis <p>Speech Marks</p> <ul style="list-style-type: none"> - Quotation Marks / Inverted Commas - Indirect Quote - Direct Quote <p>Apostrophe Rules</p> <ul style="list-style-type: none"> - Apostrophes for Contractions - Apostrophes for Singular Possessive Nouns - Apostrophes for Plural Regular Nouns - Apostrophes for Possession