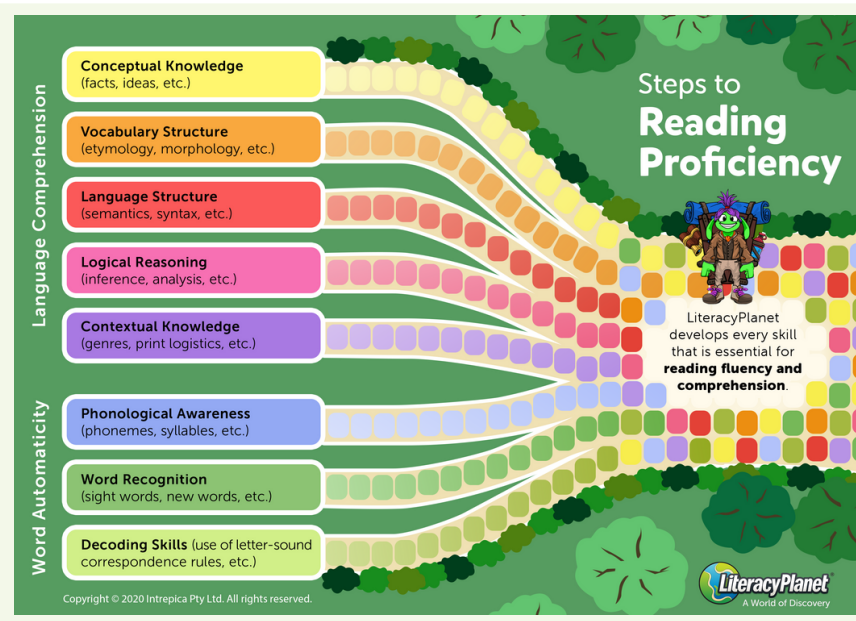


What is the Science of Reading?

The Science of Reading (SoR) is evidence-based research that encompasses years of research into how children learn to read, and what strategies and instructional approaches are most effective for reading development.

LiteracyPlanet's Steps to Reading Proficiency

LiteracyPlanet's **Steps to Reading Proficiency** model uses the SoR to scaffold reading skills: from developing word automaticity (phonological awareness and letter-sound knowledge) to building vocabulary and background knowledge for language comprehension.



How LP does it

LiteracyPlanet is an evidence-based structured literacy approach (explicit and sequential teaching) that incorporates the five components of an effective reading program as identified by the SoR: Phonics, Sight Words, Spelling, Grammar and Comprehension.

LiteracyPlanet's program enables teachers to scaffold students literacy skills, from developing their phonemic awareness and decoding ability, to building upon their vocabulary knowledge and language comprehension.

